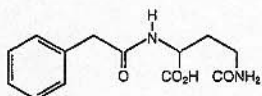


the treatment under the care of their local physicians. The follow-up evaluations are usually scheduled every month.

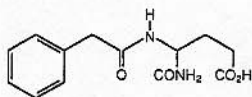
Druglike Information

Description

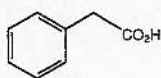
Antineoplaston A10 injection is a mixture of the sodium salts of PG and iso-PG in a 4:1 ratio. Antineoplaston AS2-1 is a mixture of the sodium salts of PN and PG in a 4:1 ratio. The molecular weight of PG is 264.28, and its empiric formula is $C_{13}H_{16}N_2O_4$. Its structural formula is as follows:



The molecular weight of isoPG is 264.28, and its empiric formula is $C_{13}H_{16}N_2O_4$. Its structural formula is as follows:



The molecular weight of phenylacetic acid is 136.14, and its empiric formula is $C_8H_8O_2$. Its structural formula is as follows:



The ingredients occur naturally in the human body but are produced synthetically for pharmaceutical use.

Safety

The treatment with A10 and AS2-1 is usually free from side effects. Special attention should be directed to monitoring of electrolytes in the patient's serum. The most important adverse reaction was serious hypernatremia, which occurred in 0.8% of the patients. Hyper-